

# GLASS STRAIGHT STEM

## CRACK, ROCK COCAINE

Brass screens are best. Ask for them at your SSP.

If you are using a scrubber for a screen, copper (Chore Boy) is better than steel wool, which can break apart and burn your mouth and throat when it gets hot.

Pre-burn your scrubber to release toxic fumes.

If sharing a pipe, use your own rubber mouthpiece (sparkplug cover or rubber bands).

Bevel Up  
brought to you  
by NASTAD

[www.bvlup.com](http://www.bvlup.com)



Scan code  
for more info



TRANSLATED BY::

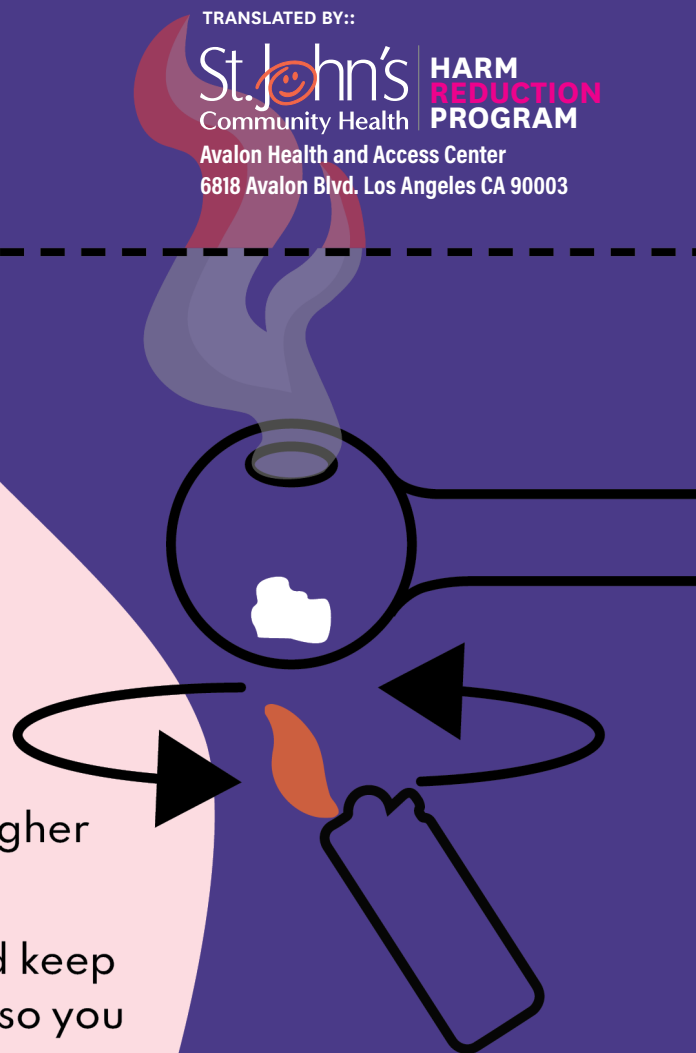
**St. John's** | **HARM**  
Community Health | **REDUCTION**  
**PROGRAM**  
Avalon Health and Access Center  
6818 Avalon Blvd. Los Angeles CA 90003

# GLASS BUBBLE PIPE

## METH, FENTANYL

Inhale slow and exhale fast.  
Holding in your hit won't get you higher  
but it will damage your lungs.

Heat the pipe from underneath and keep  
the flame moving around the bowl so you  
melt the drugs instead of burning them.  
This helps prevent the pipe from  
cracking and wastes less drugs.



# GO WITH THE VEIN FLOW

## AND INJECT TOWARD THE HEART

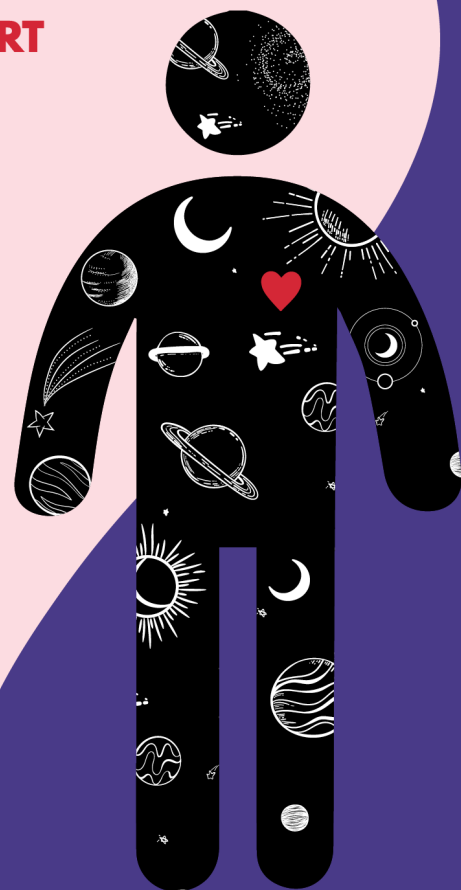
Always inject into a vein and never an artery.

Veins are close to the surface of the skin and springy to the touch.

Arteries are located deeper in the body and not as visible as veins.

If you hit an artery, it will hurt and your blood will look foamy.

*If this happens, apply pressure to the wound and seek medical attention if the bleeding does not stop.*



# TRY BOTH ARMS

**BEFORE GOING IN HANDS, WRISTS, FEET, GROIN AND NECK**

Arms usually have three accessible veins.

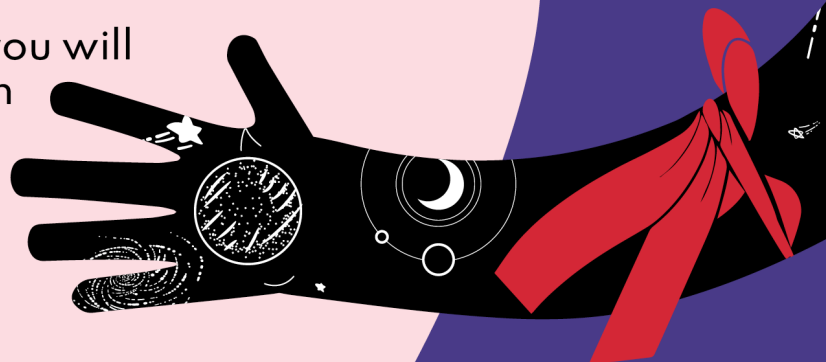
To find a vein, try using a soft tie or tourniquet.

Use a slip knot so that you can easily pull the tie off after injecting.

If possible, release the tie after your register (flag), but before you push in your hit.

If you are afraid you will miss your hit when you release the tie, push your hit in slow.

Ask your SSP for tourniquets and other supplies.



Bevel Up  
brought to you  
by NASTAD

[www.bvlup.com](http://www.bvlup.com)



Scan code  
for more info

TRANSLATED BY:

St. John's  
Community Health

HARM  
REDUCTION  
PROGRAM

Avalon Health and Access Center  
6818 Avalon Blvd. Los Angeles CA 90003

# BEVEL DOWN

**THE BEVEL IS THE SLANTED EDGE AT THE  
POINT OF THE SYRINGE**

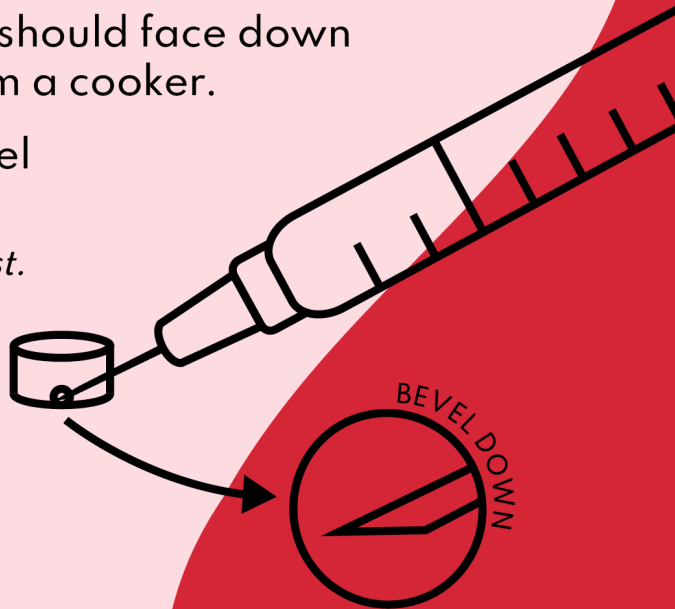
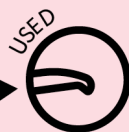
The only time the bevel should face down  
is when drawing up from a cooker.

You can protect the bevel  
by using a cotton filter.

*100% cotton filters are best.*



The bevel becomes dull  
after using it just once.



# BEVEL UP

Position the syringe with the bevel facing  
up so the sharp tip can pierce the skin first,  
easing the way for the rest of the needle.

Scan code  
for more info



[www.bvlup.com](http://www.bvlup.com)

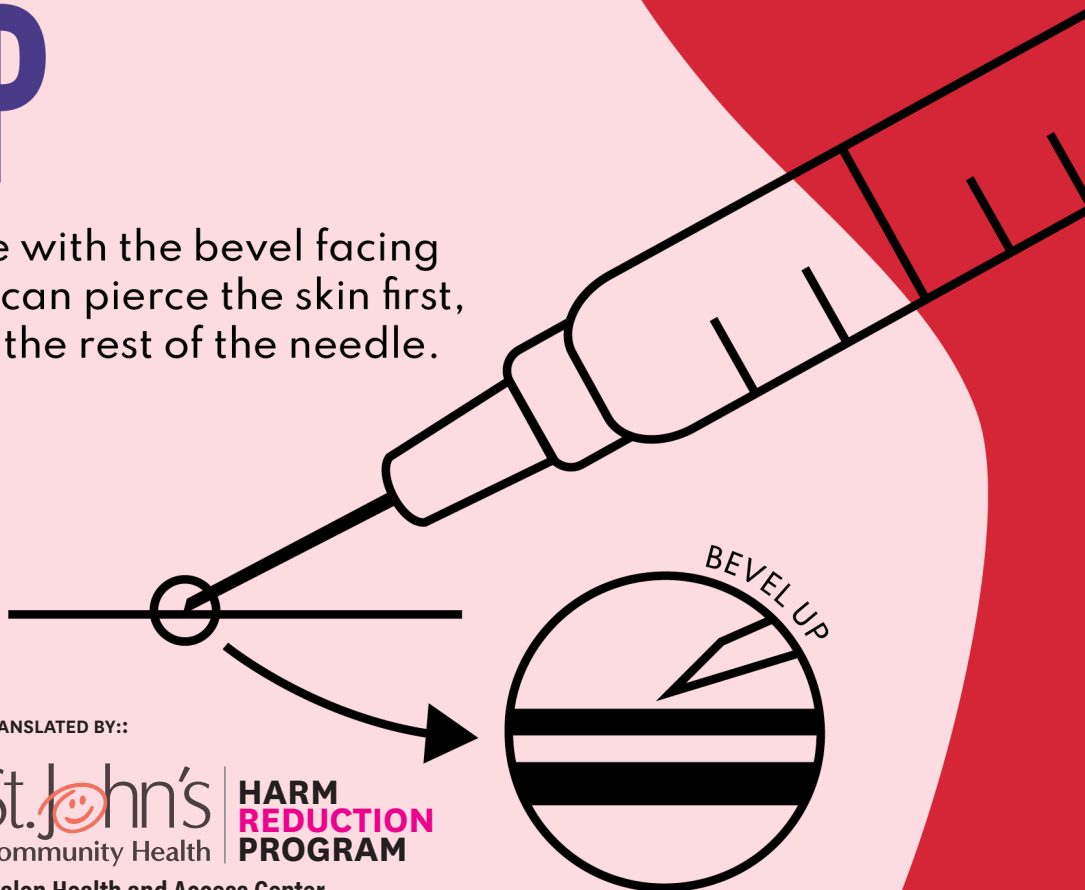
Bevel Up  
brought to you  
by NASTAD

TRANSLATED BY::

St. John's  
Community Health

HARM  
REDUCTION  
PROGRAM

Avalon Health and Access Center  
6818 Avalon Blvd. Los Angeles CA 90003



# CHASING WITH FOIL

**ROCK/CRACK  
FENTANYL  
METH**

Prepare a foil rectangle that is about 6" x 5" (the length and width of your hand).

If the foil has a shiny, plastic coating, pre-burn the foil by running the shiny side over a flame.

With the dull side facing down, place drugs on the foil and heat from underneath, keeping the lighter a few inches below the foil.



# CHASING WITH FOIL

**ROCK/CRACK  
FENTANYL  
METH**

Once the substance has liquefied, keep it moving by tilting your foil.

Use a glass stem or a straw made of foil to chase the smoke.

Take it slow, especially if it's your first time smoking or you haven't smoked in a while.

Remember that it's still possible to overdose when smoking, so give yourself a few minutes to see how you feel after that first inhale.

Bevel Up  
brought to you  
by NASTAD

[www.bvlup.com](http://www.bvlup.com)



Scan code  
for more info

TRANSLATED BY:

**St. John's**  
Community Health

Avalon Health and Access Center  
6818 Avalon Blvd. Los Angeles CA 90003

**HARM  
REDUCTION  
PROGRAM**

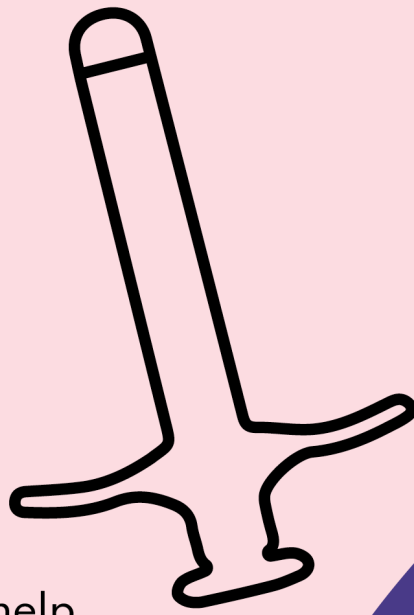
# BOOTY BUMPING

Mix drugs with 1-2 ml of clean water.

Make sure drugs have dissolved completely—heating in a cooker can help.

Break the point off a syringe (dispose of it safely) or use a lube applicator.

Lube applicators are more effective because they are designed to deliver fluid to the rectal cavity. It also holds more liquid than a syringe.



TRANSLATED BY:

St. John's  
Community Health

HARM  
REDUCTION  
PROGRAM

Avalon Health and Access Center  
6818 Avalon Blvd. Los Angeles CA 90003

---

# WATER DRIPPING

Water dripping is more effective than sniffing (liquid helps absorption).

Crush drugs as much as possible to reduce irritation.

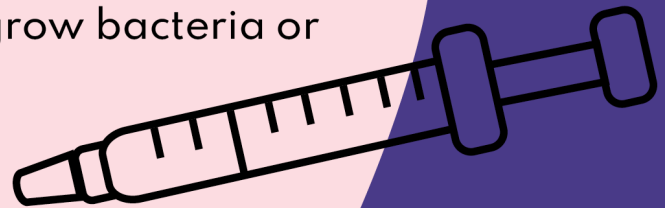
Water from best to worst: saline, sterile, distilled, bottle or tap.

For a weaker solution, add more water.

Prep small amounts—storing mixtures can grow bacteria or mold. This is extremely dangerous.

Break the point off a syringe (dispose of it safely) or use a dropper.

**P.S.** This only works for drugs that dissolve in water like fentanyl, heroin, meth, and powder coke. Water dripping does not work for crack or pills.



Bevel Up  
brought to you  
by NASTAD

[www.bvlup.com](http://www.bvlup.com)



Scan code  
for more info

IF DRUGS ARE IN YOUR ORBIT,  
YOU NEED TO KNOW ABOUT

# FENTANYL & NALOXONE

If you use alone,  
put your naloxone  
next to you before  
you do your hit.

The drug supply is inconsistent  
and unpredictable causing  
more of us to OD and die  
than ever before.

This is why some  
of us are switching  
it up and exploring  
other ways of using.

Smoking with glass or foil  
feels most like shooting up  
but you can still OD.

If you are using in a  
group, take turns so  
someone is always alert  
and able to reverse an  
overdose.

Water-dripping and  
booty bumping take  
longer to kick in but  
you can still OD.

## NALOXONE. NARCAN. WHAT'S THE DIFF?



**NALOXONE** comes in a vial and is used with  
an intramuscular syringe. (23g, 3cc, 1 inch)  
To avoid drawing up air, tip vial upside down.



**NARCAN** comes in a nasal spray.  
It's 4x stronger than naloxone but can  
take longer to kick in so please wait  
two minutes between doses.

There is no such thing as a  
"Narcan/naloxone resistant" overdose.

Naloxone and Narcan will work on all  
opioid-involved overdose, including  
fentanyl, carfentanil, and fentanyl analogs.

St. John's  
Community Health

HARM  
REDUCTION  
PROGRAM

Avalon Health and Access Center  
6818 Avalon Blvd.  
Los Angeles CA 90003

Bevel Up  
brought to you  
by NASTAD

Scan code  
for more info



[www.bvlup.com](http://www.bvlup.com)