

20/200

20/100

20/70

20/50

20/40

20/30

20/25

20/20

20/200

20/100

20/70

20/50

20/40

20/30

20/25

20/20

WHEN  
D I D  
PROVIDING  
HEALTHCARE  
B E C O M E  
A N A C T O F  
DEFIANCE



---

## **C O N T E N T S**

|           |  |
|-----------|--|
| <b>1</b>  | <b>LETTER FROM OUR CEO</b>                           |
| <b>2</b>  | <b>TRANSGENDER HEALTH PROGRAM'S 10TH ANNIVERSARY</b> |
| <b>4</b>  | <b>COMMITTED TO BLACK MATERNAL AND INFANT HEALTH</b> |
| <b>6</b>  | <b>MPOX AND THE ART OF PREVENTION</b>                |
| <b>8</b>  | <b>DEDICATION TO SCHOOL-BASED HEALTH</b>             |
| <b>10</b> | <b>EXPANSION TO IMPACT HEALTH EQUITY</b>             |
| <b>12</b> | <b>BRINGING BEAUTY TO SOUTH LOS ANGELES</b>          |
| <b>14</b> | <b>2022 BY THE NUMBERS</b>                           |
| <b>16</b> | <b>2022 FINANCIAL STATEMENT</b>                      |
| <b>18</b> | <b>2022 YEAR IN REVIEW</b>                           |
| <b>20</b> | <b>2022 GRANTS AND CONTRACTS</b>                     |
| <b>22</b> | <b>2022 DONORS, FUNDERS, AND PARTNERS</b>            |
| <b>24</b> | <b>LOCATIONS</b>                                     |

---

## THE WORK OF PROVIDING HEALTHCARE TO UNDERSERVED COMMUNITIES IS NOT EASY.

But when you factor in the unprecedented and increasing attacks coming from states across the country on our basic right to health – from banning healthcare for trans people, to eliminating healthcare for immigrants, to abolishing access to reproductive health, the work becomes almost impossible. Fifteen years after the passage of the Affordable Care Act, that resulted in an unparalleled expansion of access to healthcare, we are now operating in an environment where providing healthcare services has become an act of civil disobedience.

# DEFIANCE

While California continues to allow access to critical services for our communities, the impact of these decisions to deny healthcare in dozens of states across the country, in the courts, and in the halls of Congress – negatively impacts the communities we serve here as well. That's why we need to be more innovative, and bolder. What we do here becomes a defiant example of what community health must become.

That is why St. John's provided more than 500,000 COVID vaccinations to LA's most vulnerable communities. That is why we vaccinated more than 10,000 people against MPOX. That is why we are expanding our Black maternal and infant health program across our network of 21 health centers and beyond. That's why St. John's built one of the largest transgender health programs in the country. That is why St. John's is the largest provider of healthcare services to undocumented immigrants in the nation. We are defiantly committed to the right to health for all of our communities. And we will continue to grow and expand in order to magnify our resistance to the increasing actions that deny people the basic human right to health.



Jim Mangia, MPH

President & Chief Executive Officer

# TRANSGENDER HEALTH PROGRAM'S 10TH ANNIVERSARY

In the face of unprecedented attacks on the rights of transgender individuals to basic health care in states across the country, St. John's is determined to express its commitment to continue providing the highest quality and affirmative health care to the transgender community. St. John's began providing trans-specific health services in 2013 and has now provided life-saving healthcare to more than 10,000 transgender individuals. In a grand ten-year anniversary celebration in downtown Los Angeles, hundreds of members of the trans community and their supporters asserted their love, support, and ongoing commitment to trans health.

*"The impact that the Transgender Health Program has had on the lives of the transgender community is immeasurable, and we look forward to bringing continued advocacy and quality of life improvements for one of the most marginalized communities."*

*— Kazumi Yamaguchi*

Transgender Health Program Director







## TRANS GALA 2023



The St. John's Community Health Transgender Health Program's 10 Year Gala featured a night of transgender talent, over 400 community members, allies, and supporters turned out to support and celebrate the Transgender Health Program.



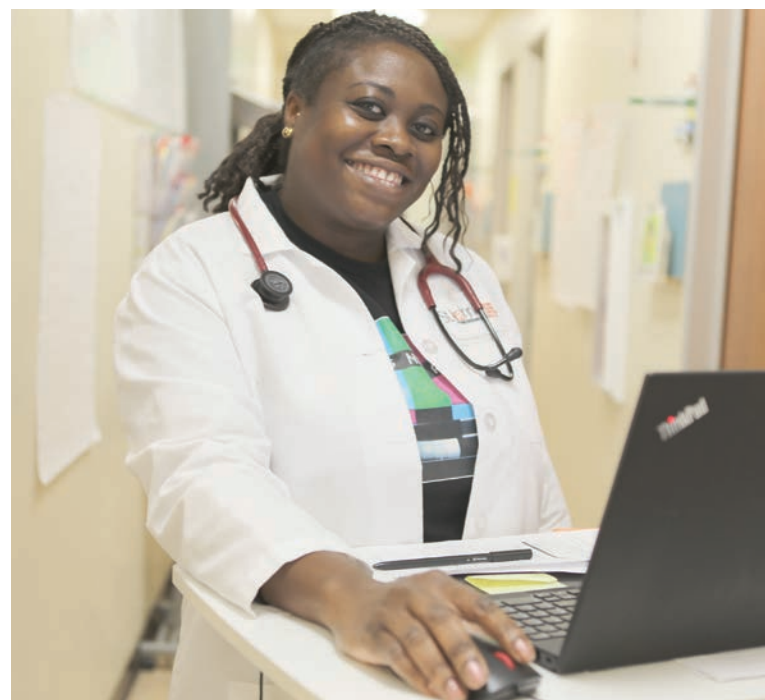
# COMMITTED TO BLACK MATERNAL AND INFANT HEALTH

In 2022, St. John's launched the Black infant and maternal health program Committed to Black Wellness and Health (CBWH) – bringing a grassroots and intensive intervention to the historic poor persistent maternal and infant mortality rates impacting the Black/African American community. The innovative program is led by a culturally competent team of Black/African American doctors, therapists, and staff who address social determinants of health and offer intensive case management, early intervention, social support, behavioral health, and pre- and post-natal healthcare services. The goal is to improve Black infant and maternal health, eliminate racial disparities in maternal care and reduce infant mortality in South Los Angeles.

*“St. John's Black Wellness and Health Program envisions a safe environment where both Black women and girls, can receive quality prenatal and postnatal healthcare from a culturally competent team of physicians and staff.”*

*— Heather Alexander*

CBWH Program Director







# MPOX AND THE ART OF PREVENTION

Focusing on prevention is a critical component of St. John's work. When the MPOX outbreak occurred in June 2022, St. John's marshalled all of its resources to mobilize and support the communities most impacted by the outbreak – the LGBTQ community – by providing mass vaccinations at multiple health center sites. Focusing on LGBTQ communities of color, who have historically been left out of gay health efforts, St. John's provided MPOX vaccination to over 10,000 people at sites on Crenshaw Blvd., Compton, and throughout South Los Angeles, helping to prevent the outbreak from turning into an epidemic.

*“Our vaccination efforts against MPOX were a true reflection of providing health-care equity demonstrated by our immediate responsiveness to the outbreak in a community that is often marginalized.”*

*— Dr. Sushant Bandarpalle*

Regional Medical Director









# DEDICATION TO SCHOOL-BASED HEALTH

With the opening of the Sylvia Mendez Health and Wellness Center at the Felicitas & Gonzalo Mendez High School, St. John's cemented its commitment to school-based health. Studies have shown that school-based health centers promote health and educational equity because they dramatically increase school attendance, help eligible students enroll in health insurance, connect students' family members with health coverage, and offer services that support at-risk students. St. John's now operates eight school-based health centers and direct student mobile health services in partnership with the Los Angeles, Compton, and Lynwood Unified School Districts.

*"We are expanding our school based health centers to ensure greater access to healthcare for students, their families and our communities."*

*— Jorvon C. Smith*

Director of School-Based Health Centers









# EXPANSION TO IMPROVE HEALTH EQUITY

COVID had a huge impact on the mental health needs of our communities. St. John's decided to address the mental health crisis in South Los Angeles head on, by securing a \$6.5 million state grant to build a comprehensive behavioral health center in central Compton that will provide a full range of behavioral health services and support.

St. John's is also set to open a community health center focused on children with developmental disabilities and their families in partnership with Special Needs Network in the recently completed Jaqueline Avant Children and Family Center across the street from Martin Luther King Jr. hospital in Willowbrook. St. John's is also scheduled to open an additional school-based health center at Theodore Roosevelt High School in Boyle Heights.

Given the tremendous need and the lack of health center services in the Inland Empire, St. John's will be opening four community health centers over the next several months in San Bernardino, San Jacinto/Hemet, Riverside and the Coachella Valley.

*"St. John's Community Health is continuing to grow to meet the needs of low-income families throughout Los Angeles. And now we are expanding into an area with even greater need for healthcare access — the Inland Empire"*

*— Tim Neiman*

SJCH Chief Administrator Officer







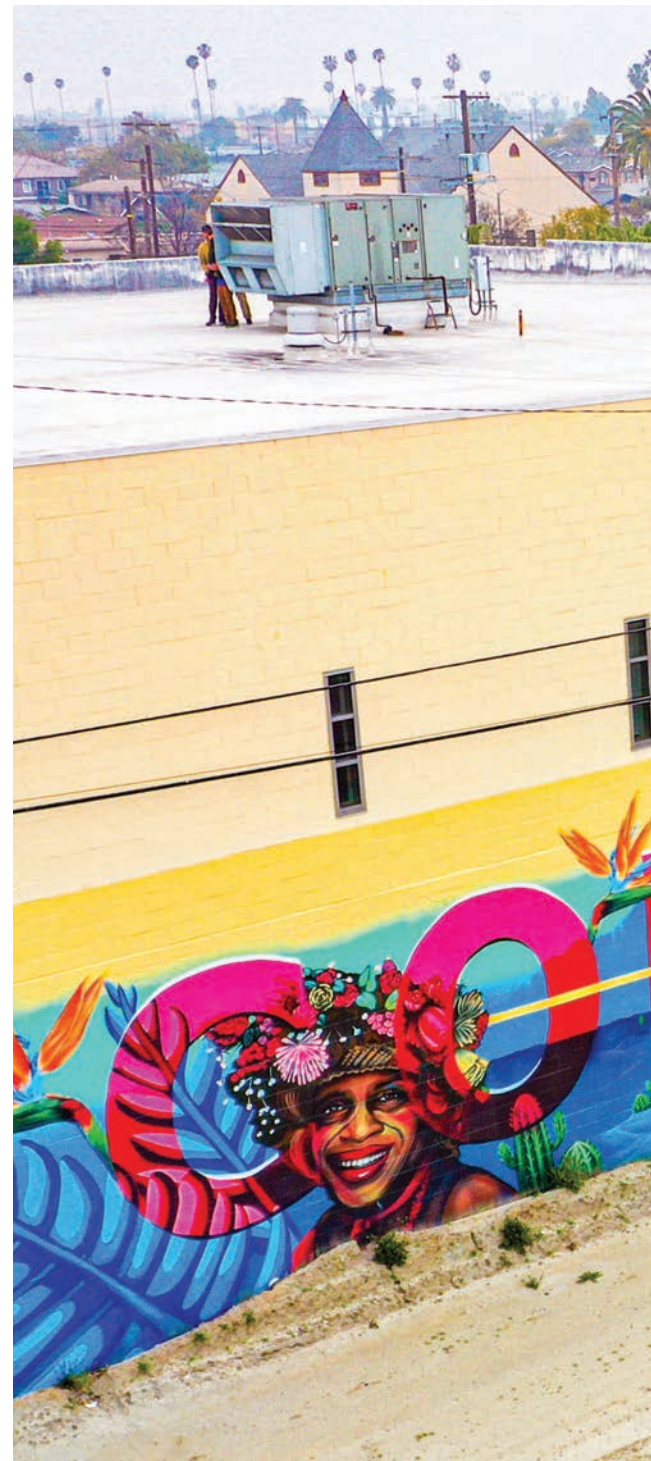
# BRINGING BEAUTY TO SOUTH LOS ANGELES

In collaboration with artist Erin Yoshi and a team of local muralists, St. John's commissioned a mural on the side of its main health center and administrative headquarters at Hoover and Slauson, in the heart of South Los Angeles. The mural, entitled "COMMUNITY HEALTH" depicts the history of the people of South Los Angeles and focuses on the continuing efforts to improve community health outcomes for South Los Angeles through direct services and collaboration.

*"The Community Health mural is a celebration of the right to live well, that all communities deserve access to healthcare, as well as safety, services and opportunities to thrive."*

— Erin Yoshi

Mural Artist













# 2022 BY THE NUMBERS

## PRIMARY CARE PATIENT VISITS:

**549,822**

## MEDICAL VISITS:

**314,097**

Dental visits: 64,454

Behavioral Health visits: 22,059

Substance use treatment visits: 5,395

Diabetes treatment visits: 54,599

Health education and case management visits: 137,444

## TOTAL UNDUPLICATED PATIENTS:

**117,220**

Patients Living Below 200% Federal Poverty Level: 107,842

Individuals Enrolled into Medi-Cal: 66,461

Uninsured patients served: 30,871

Patients served in school-based health centers: 20,600

Individuals served from public housing sites: 12,941

Homeless individuals served: 8,747

## COVID VACCINES GIVEN:

**525,513**

## MPOX VACCINES GIVEN:

**10,206**

## TOTAL HEALTH CENTER SITES:

**24**

Community health centers: 13

School-based health centers: 8

Mobile clinic units: 3





# 2022 FINANCIAL STATEMENT

## STATEMENT OF OPERATIONS 2022

|  |                    |
|--|--------------------|
| <b>Revenues, Gains and Other Support Without Donor Restrictions</b>                    |                    |
| Patient Service Revenue  | 65,178,044         |
| Capitation Revenue   | 21,677,884         |
| Grant Revenue  | 40,602,038         |
| Contributions  | 3,499,558          |
| Other  | 1,772,072          |
| Net assets released from restrictions used for operations                              | 1,655,229          |
| <b>Total Unrestricted Revenues, gains and other support without donor restrictions</b> | <b>134,384,825</b> |
| <b>Expenses and Losses</b>   |                    |
| Salaries and wages   | 62,690,542         |
| Employee benefits  | 12,483,947         |
| Purchased services and professional fees   | 17,791,202         |
| Supplies and other   | 34,250,450         |
| Rent   | 1,349,123          |
| Depreciation and amortization  | 2,040,293          |
| Interest   | 348,617            |
| <b>Total expenses and losses</b>   | <b>130,954,175</b> |
| <b>Excess of Revenue Over Expenses</b>   | <b>3,430,650</b>   |
| Infrastructure Grant Revenue   | 14,784             |
| <b>Net Surplus</b>   | <b>3,445,434</b>   |





# GRANTS AND CONTRACTS

We are most grateful to the following government agencies and private foundations for their support.

American Association of Pediatric Dentistry  
American Cancer Society  
Anonymous  
BAILA  
Bank of America  
Blue Shield  
Broadway Cares/Equity Fights AIDS  
California Board of State and Community Corrections  
California Department of Social Services  
California Department of Public Health  
California Governor's Office of Emergency Services  
California Advancing and Innovating Medi-Cal  
California Community Foundation  
California Department of Health Care Services  
The California Endowment  
Centers for Disease Control and Prevention  
CDC Foundation  
Cedars-Sinai Medical Center  
Cigna Healthcare  
City of Los Angeles  
The Office of Councilman Curren Price  
Department of Public Health Community Health Councils  
Delta Dental Foundation  
Essential Access Health  
Every Child Foundation  
Facebook  
Federal Emergency Management Agency  
Gilead Foundation  
Google  
HealthySteps  
Heluna Health  
Housing Opportunities for Persons with AIDS  
HRSA  
Korean Youth + Community Center  
LA Care Health Plan  
Los Angeles County Department of Health  
Los Angeles Trust for Children's Health  
Northrop Grumman  
Northrop Grumman's Employee Charity Organization  
Prevent Cancer Foundation  
The Office of Supervisor Sheila Kuehl  
Society to Improve Diagnosis in Medicine  
Substance Abuse and Mental Health Services  
United Way of Greater Los Angeles  
Venable Foundation  
Visionary Women

# DONORS, FUNDERS AND PARTNERS

Our work would not be possible without the support and collaboration of the following Donors and partners.

## Individual Donors

Milan Adaea Zavolta  
Lori Alexander  
Sydney Allen  
Steve Allwright  
Danny Alvarado  
Lucero Amaral  
Lisa Andelin  
Kylie Anderman  
Dasean Anderson  
Chris Ayers  
Margaret Baackes  
Lizhette Badillo  
Sushant Bandarpalle  
Ana Barahona  
Ernesto Barahona  
Emily Beatty  
Alita Bernal  
Scott Bivens  
Scott Bonham  
Rowena Bouquet  
Areg Boyamyan  
Boris Boyanovsky  
Geneva Bray  
Maria Brenes  
Murray Brightman  
Josh Briseno  
Amos & Nicole Buhai  
Mollie Burks  
T C  
Alberto Cardenas  
Gale Castillo  
Charles Chan Massey  
Michael Chapek  
Mimi Choi  
Paul Chung  
Kori Citrin  
Todd Clark  
Anne M. Clarke  
Mario Clemente  
Chip Clements  
Ben Cockerill  
Michael Condro  
Sharon Correa  
Sara Curiel  
Christopher Cuttriss  
Eric De la cruz  
Monette DeGuzman  
Dwayne Delaine  
Liana Derus

Lalith DeSilva  
Anura Desilva  
Ruwanthi Desilva  
Pri DeSilva  
John Doe  
Kilei Elei  
Tom Ensminger  
David Feau  
Elena Fernandez  
Barbara Ferrer  
Jonathan Finkelstein  
Brenda Freiberg  
Jaqueline Garcia  
Ana Garsia  
Deshae Gehr  
Danny Getzoff  
Jackie Goldberg  
Guillermo Gonzalez  
Nicholas Goodbody  
Bennett Gosiker  
Bonnie Gottlieb  
Grace P. Granados  
Gilda Haas  
Sandra Hamada  
Elizabeth Hamilton  
Marqueece Harris-Dawson,  
Councilmember of the Eighth District  
of the City of Los Angeles  
Vivienne Hau  
Scott Henderson  
Gonzalo Herrera  
Irma Herrera  
Jerrell Hightower  
Robert Hoo  
Shelley Horata  
Gloria Huerta  
Christine Hull  
Michael Hull  
Buffany Hunter  
Juliet Hwang  
Nancy and Mahmood Ibrahim  
Lisa Ireland  
S Jaime  
Tiffany Johnson  
Michael Kanter  
Daniel Kaye  
Sedona and Odessa Kaye  
Dolores Kirtley  
Michael Langevin

Ka Man Law  
Nicole Lee  
Barbara Lee  
Valinda Lee  
Niceole Levy  
Michelle Lewis  
Ebonie Loftin  
Marisol Lopez  
Anabel Luna  
Kiran & Anuradha Magee  
Ryan Malone  
Marlene Manjarrez  
Zachary Marcus  
Avril Martin  
Ernesto Martinez  
Lauren Martinez  
Manuela Martinez  
Joy Mashaal  
Calvin McCarthy  
Kimberly McGoldrick  
Mollie McLean  
Kevin & Sophie Mclean  
Amy Miles  
Wendy Moncada  
Katherine Moncrief  
Isela Monterrosas  
Tatiana Moore  
Jackie Morris  
Ralf Motullo  
Anitha Mullangi  
Tim Neiman  
James Nice  
Michael Niemeyer  
Jason Nitz  
Robert Nocon  
Mai Nojima  
Michelle Park  
Candace Pau  
Vanessa Pena  
Raymond Penalosa  
Christian Perez  
Marissa Perez  
Tom Polenzani  
Arlene Porras  
Rob Poynter  
Maryjane Puffer  
Tong Qi  
Jonathan Qu  
Patricia Ralston

Benjamin Randolph  
Anna Richards  
Matthew Robb  
Hannah Rodriguez  
Jeff Rodriguez  
Elena Roschdi  
Marjory Ross  
Gery Ryan  
Rick Sales  
Lucas Saporito  
Michell Saucedo  
Katherine Schwartz  
Michael Seales  
Sammi Shepherd  
Hilary Siebens  
Kim Sleder  
Caroline Snead  
Richard and Elizabeth Sobelle  
Russell Sommer  
Cynthia Strathmann  
Christina Supe  
Sophie, Josh, Maude &  
Isaac Sussman  
Martin Swartz  
Allie Taur  
Peter Tawfik  
Spencer Tepper  
Lindsey Thompson  
Lindsey Tien  
Ashlynn Torres  
Yanell Torres  
Warner R. Traynham  
Carol Turner  
Fernando Vasquez  
Katerina Venderova  
John Villalobos  
Gabrielle Warnick  
Jacob Watson  
Sandra Weathersby  
Tara Wheeler  
Jon Wine  
Jackie Xu  
Kazumi Yamaguchi  
Jesus Yanez  
Christina Yoakum  
Giulio Zavolta



## Corporate Donors

Arthur J. Gallagher  
Aston Carter  
Blue Shield  
BlueNovo  
Bolton & Co  
Breakfast Anytime  
Care Systems  
Cigna  
City National Bank  
Coleman Associates  
Dignity Health  
Ensign Partners  
Expense Reduction Analysts  
FORVIS  
Foundation Lab  
Greg Facktor Associates  
Harbor Building Maintenance, Inc.  
Healthnet  
Kadima Security, Inc.  
Kieckhafer Schiffer LLP  
MedPoint Management  
Parker Brown  
Prima Waste Mgmt.  
Quickr Printr  
Riot Games, Inc.  
Rush Factor Elite  
Spectrum  
The Walt Disney Company  
Tonys Glove & Safety  
Totum Corp.  
Xerox

## Organization Donors

Advocates for Human Potential, Inc.  
Anthem Blue Cross  
Board of State and Community Corrections  
Brotherhood Crusade  
CAL CRG  
California Endowment  
Californians Allied for Patient Protection  
CALOES  
CDC  
Cedars Sinai  
CHIRLA (Coalition for Human Immigrant Rights  
Los Angeles)  
CIELO (Comunidades Indigenas en Liderazgo  
City of Los Angeles)  
Clinica Monsenor Oscar A. Romero  
Dance for Life  
Department of Health Services  
Department of Public Health  
Esperanza Community Housing Corporation  
Gilead Foundation  
Health Net  
Heluna Health  
HRSA Health Resources & Services Administration  
Inner City Struggle  
Kaiser Permanente  
LA Care Health Plan  
LACDA Los Angeles County Development Authority  
LAHSA  
Los Angeles Alliance for New Economy  
Los Angeles County Federation of Labor  
MLK Community Health Foundation  
NFL Foundation  
SAMHSA  
SEIU 2015

SEIU 721

SEIU IBEW (International Brotherhood of Electrical Workers) Local 18  
The LA Trust for Children's Health  
Title X  
United Healthcare  
United Way  
Venice Community Housing

## Community Partners

ARC  
BAART  
Bienestar  
CCALAC  
Charles Drew University  
Children's Bureau  
CIELO  
CLAIRE MATRIX  
Compton Community College  
Esperanza Community Housing Corporation  
Homeless Outreach Program Integrated Care (HOPICS)  
Imperial Court of Los Angeles and Hollywood  
Inner City Struggle  
LA Regional Food Bank  
LAUSD  
Mass Liberation  
Mom's Meals  
PCSLA  
Peace Over Violence  
Project Angel Food  
Proyecto Pastoral  
SAGE  
Special Needs Network  
Tarzana Treatment Center  
Unique Woman's Coalition  
Volunteers of America

## Labor/Union Partners

CLEAN Car Wash Worker Center  
IATSE - International Alliance of Theatrical Stage Employees  
IBEW - International Brotherhood of Electrical Workers, Local 18  
LCS - Labor Community Services  
Los Angeles County Federation of Labor, AFL-CIO  
SEIU 2015  
SEIU Local 721  
SEIU UHW  
SEIU USWW  
Teamsters 396  
Teamsters 399  
Teamsters 630  
Teamsters 952  
Teamsters Port Division  
UFCW 770  
UFCW 1428  
Unite HERE Local 11  
Workers United Local

## Elected Officials

Karen Bass, Mayor, City of Los Angeles  
Wendy Carrillo, California State Assembly Member, District 51  
Maria Elena Durazo, California State Senator, District 26  
Marqueece Harris-Dawson, L.A. City Councilmember, District 8  
Reggie Jones-Sawyer, California State Assembly Member, District 57  
Sydney Kamlager-Dove, Congresswoman, District 37  
Holly Mitchell, L.A. County Supervisor, District 2  
Curren Price, L.A. City Councilmember, District 9  
Lola Smallwood-Cuevas, California State Senator, District 28  
Hilda Solis, L.A. County Supervisor, District 1

# YEAR IN REVIEW



## Health and Human Services Secretary Xavier Becerra and L.A. Mayor Karen Bass Tour St. John's

Secretary Xavier Becerra and Mayor Bass joined Dr. Diana Ramos California Surgeon General and St. John's CEO Jim Mangia, to conduct a leadership roundtable on health and homelessness.



## St. John's Announces \$25 an hour minimum wage

Supervisor Holly Mitchell joined labor leaders Bob Schoonover and Dave Regan and hundreds of labor activists at the LA County Federation of Labor, where St. John's announced that they were raising the minimum wage for all employees to \$25 an hour, effective March 1, 2023.



## Navidad en el Barrio

St. John's sponsored a holiday celebration for the 500 most vulnerable families we serve. Staffed entirely by volunteers, each child had a visit with Santa and received gifts. Parents received food to cook a healthy holiday meal. Volunteers and support from Bolton, Kadima Security and Care Systems, Inc. made the event possible.

## California State Controller Malia Cohen Holds Roundtable with St. John's on Healthcare Access

Controller Malia Cohen joins CEO Jim Mangia and leaders at St. John's Community Health to host a roundtable on access to healthcare for low-income communities.





### Department of Public Health Sponsors CDC Director Visit

LA County Department of Public Health sponsored a visit by Centers for Disease Control and Prevention Director Dr. Rochelle Walensky to St. John's in May 2022 to highlight our massive COVID vaccination efforts. Several community health center leaders participated in the roundtable discussion.



### Department of Housing and Urban Development Secretary Marcia Fudge Tours St. John's/Abode Affordable Housing Site

Housing and Urban Development Secretary Marcia Fudge tours the Abode Communities Rolland Curtis affordable housing site and St. John's health center in South Los Angeles to announce joint federal county and city efforts to address homelessness.



### Fighting Hunger in South Los Angeles

St. John's, in partnership with the Los Angeles Regional Food Bank, started a food distribution program in our Crenshaw and Avalon sites last May. The program has been successful in addressing food insecurity by distributing healthy food items, including fresh fruits and vegetables. In the first year of providing the service, the program helped more than 8,000 people.



### St. John's Celebrates the 2022 Movable Feast

Last September 18, over 300 people attended the first Movable Feast since the pandemic started. Several new chefs joined the tasting event. The funds raised through this event are used to continue providing life-saving services to the underserved communities of South Los Angeles.

# LOCATIONS

## COMMUNITY HEALTH CENTERS

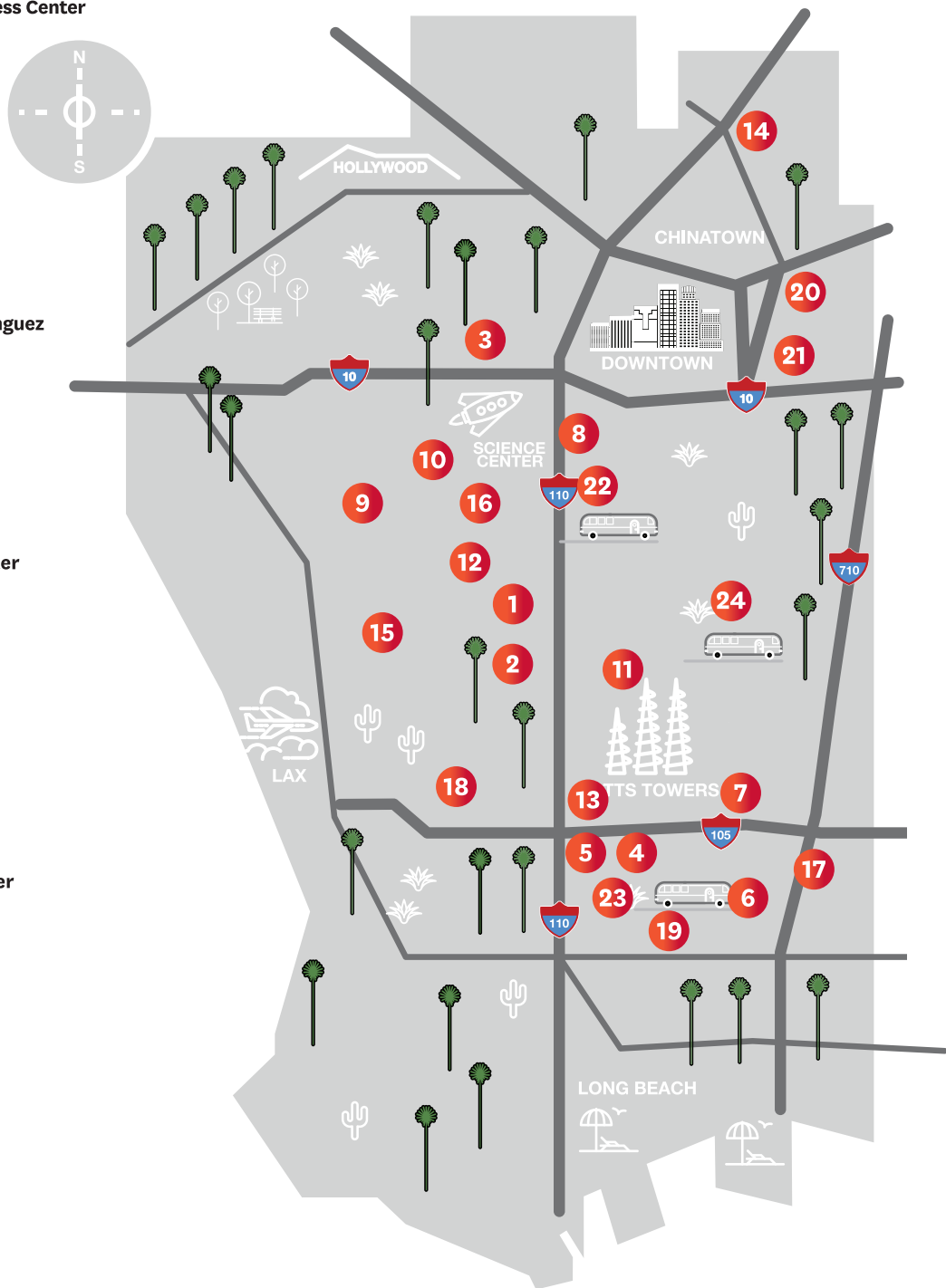
- 1 Dr. Louis C. Frayser Health Center**  
5701 S. Hoover Street  
Los Angeles, CA 90037
- 2 S. Mark Taper Foundation Health and Wellness Center**  
808 W. 58th Street  
Los Angeles, CA 90037
- 3 Magnolia Place Health Center**  
1910 S. Magnolia Avenue, Suite 101  
Los Angeles, CA 90007
- 4 W.M. Keck Foundation Health Center**  
2115 N. Wilmington Avenue  
Compton, CA 90222
- 5 Lynne Gillies Pediatric Health Center**  
2115 N. Wilmington Avenue  
Compton, CA 90222
- 6 East Compton Health Center at Casa Dominguez**  
15715 S. Atlantic Avenue, 2nd Floor  
East Rancho Dominguez, CA 90221
- 7 Leavey Health Center**  
3628 E. Imperial Highway, Suite 301  
Lynwood, CA 90262
- 8 Rev. Warner Traynham Health Center**  
326 W. 23rd Street  
Los Angeles, CA 90007
- 9 Crenshaw Adult and Pediatric Health Center**  
4251 Crenshaw Boulevard  
Los Angeles, CA 90008
- 10 Rolland Curtis Gardens Health Center**  
1060 West Exposition Blvd.  
Los Angeles, CA. 90007
- 11 Avalon Health and Access Center**  
6818 Avalon Blvd.  
Los Angeles, CA 90003
- 12 Boys & Girls Club Dental Clinic**  
1000 W. 50th Street  
Los Angeles, CA 90037
- 13 St. John's/SSN Special Needs Health Center**  
Jacqueline Avant Children & Family Center  
1741 E. 120th Street 2nd Floor  
Los Angeles, CA 90059

## SCHOOL-BASED HEALTH CENTERS

- 14 Lincoln High School**  
2512 Alta Street  
Los Angeles, CA 90031
- 15 YES Academy / Hyde Park Elementary**  
6505 8th Avenue  
Los Angeles, CA 90043
- 16 Mark Ridley-Thomas Wellness Center at Manual Arts**  
4085 S. Vermont Avenue  
Los Angeles, CA 90037
- 17 Dominguez High School**  
15301 S. San Jose Avenue  
Compton, CA 90221
- 18 Washington Prep Wellness Center**  
1555 W. 110th Street  
Los Angeles, CA 90047
- 19 Compton College**  
1111 E. Artesia Boulevard  
Compton, CA 90221
- 20 Sylvia Mendez Wellness Center**  
1200 Plaza del Sol Street  
Los Angeles, CA 90033
- 21 Roosevelt School Based Health Center**  
444 S. Mathews Street,  
Los Angeles, CA 90033

## MOBILE HEALTH

- 22 3 Mobile Clinics**  
Multiple locations in  
South Los Angeles
- 23**
- 24** Multiple locations in  
South Los Angeles  
and Compton







## BOARD OF DIRECTORS

Lilia Garcia, Chair

Patricia Escamilla, Vice Chair

Joanna Mimi Choi, MD, Secretary

## MEMBERS

Juana Cael

Christopher Callahan

Carmen J. Cole

Bill Dawe

Ernesto Gonzales

Leonor Guzman

George Harris

Jamal McCree

Martha Ortiz

Cecilia A. Sibley

Lin Tien, CFA

Sandra Weathersby

## SENIOR MANAGEMENT TEAM

Jim Mangia, MPH, President and Chief Executive Officer

Ernesto Barahona, Chief Development Officer

Elizabeth M. Meisler, MBA, CPA, Chief Financial Officer

Tim Neiman, Chief Administrative Officer

Elena Fernandez, LCSW, Chief Program Officer

Ana Campos, Chief Operations Officer

Sharon Correa, Chief Information Officer

Michael Beral, DDS, Director of Dental Services.

Maria Genie, Executive Project Director

Deborah Bradley, LMFT, PhD, Director of Behavioral Health

## MEDICAL LEADERSHIP TEAM

Dr. Sushant Banderpalle, Regional Medical Director

Dr. Alexis Gordon, Regional Medical Director

Dr. Bukola Olusanya, Regional Medical Director



## ABOUT THE ANNUAL REPORT

Editors: Mario Clemente, Tina Christopulos

Art Director: Reyes Meléndez

Photographers: Rick Hurvitz, Reyes Meléndez, Gloria Mesa, Pablo Serrano

St. John's Community Health is a proud "union shop" with a strong and innovative partnership with SEIU Local 721. We are honored to work closely with our union allies in the fight for social justice for our patients, our employees, our community, and our network of health centers.

LABOR DONATED / SJCH © ALL RIGHTS RESERVED

“

**HEALTH****IS A HUMAN RIGHT,  
NOT A PRIVILEGE  
TO BE PURCHASED.”****— REP. SHIRLEY CHISHOLM, 1972****ST. JOHN'S COMMUNITY HEALTH**

is a 501(C)(3) network of community health centers.

[www.wellchild.org](http://www.wellchild.org)    [wellchildorg](https://www.wellchild.org)

808 W. 58th Street Los Angeles, CA 90037

Tel: 323-541-1600 fax 323-541-1601